



TS1006 TIER 1 12-OUTLET ADVANCED POWERSTRIP

Provides premium-quality surge protection that reduces standby energy wasted by PC and TV peripheral electronics

OVERVIEW

Standby power, also commonly referred to as vampire power or phantom load, is the energy electronics continue to draw when they are plugged in, but turned off. The TrickleStar TS1006 12-outlet Advanced PowerStrip (APS) provides premium, fireproof surge protection and helps eliminate standby power wasted by PC and TV peripheral electronics. The APS works on a simple control/switched basis. When the control device, typically a TV or computer, is on, the switched outlets will have power and the devices plugged into them can be used. When the controlled device is turned off (or goes into a power-saving mode), the devices plugged into the switched outlets automatically turn off and stop drawing standby power. This saves energy, which trims the user's electric bill to save them money.

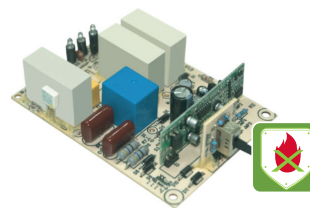
KEY FEATURES

- 12 outlets:
 - 1 control (1 transformer-spaced)
 - 3 always-on (3 transformer-spaced)
 - 8 switched outlets (2 transformer-spaced)
- 2 in 1 power and circuit breaker
- 4,320 Joules of surge protection at 500 VPR
- Adjustable threshold switch
- Consumes <1W at all times
- LED status indicators (ground, surge, switched)
- <40 dB EMI/RFI noise filtering
- 4 ft. heavy-duty cord
- Space-saving angled plug
- Child safety covers
- Coax cable protection
- RJ11 telephone/fax protection

PREMIUM FIREPROOF SURGE PROTECTION

Traditional surge suppression products use standard Metal Oxide Varistors (MOVs). All TrickleStar APSs use ceramic-encased MOVs, which are capable of suppressing more energy and dissipating heat faster than traditional MOVs.

Ceramic-encased MOVs also have a lifespan up to three times longer than standard MOVs, so our product will protect electronics from surges for longer.



Ceramic Encased
Fireproof MOV

EMI/RFI NOISE FILTERING

The TS1006 features advanced noise filtering circuitry that reduces electromagnetic interference (EMI) and radio frequency interference (RFI), delivering cleaner power and improved video and sound quality.

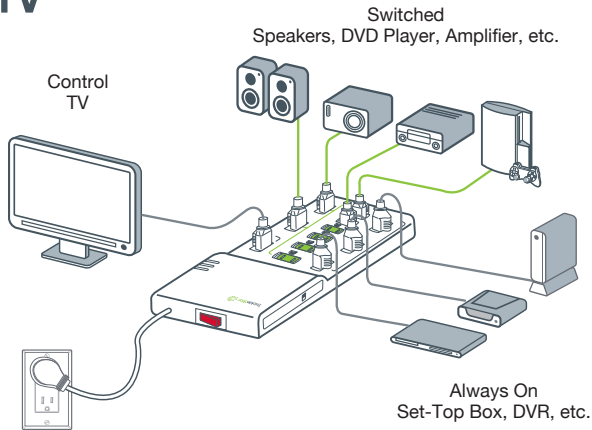
PRODUCT WARRANTY

This product is backed by TrickleStar's Product Warranty and Connected Equipment Warranties:

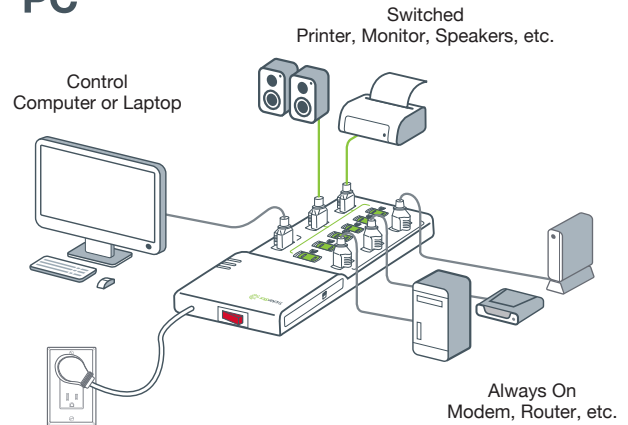
- 10-year Product Warranty
- \$100,000 Connected Equipment Warranty

SETUP GUIDE

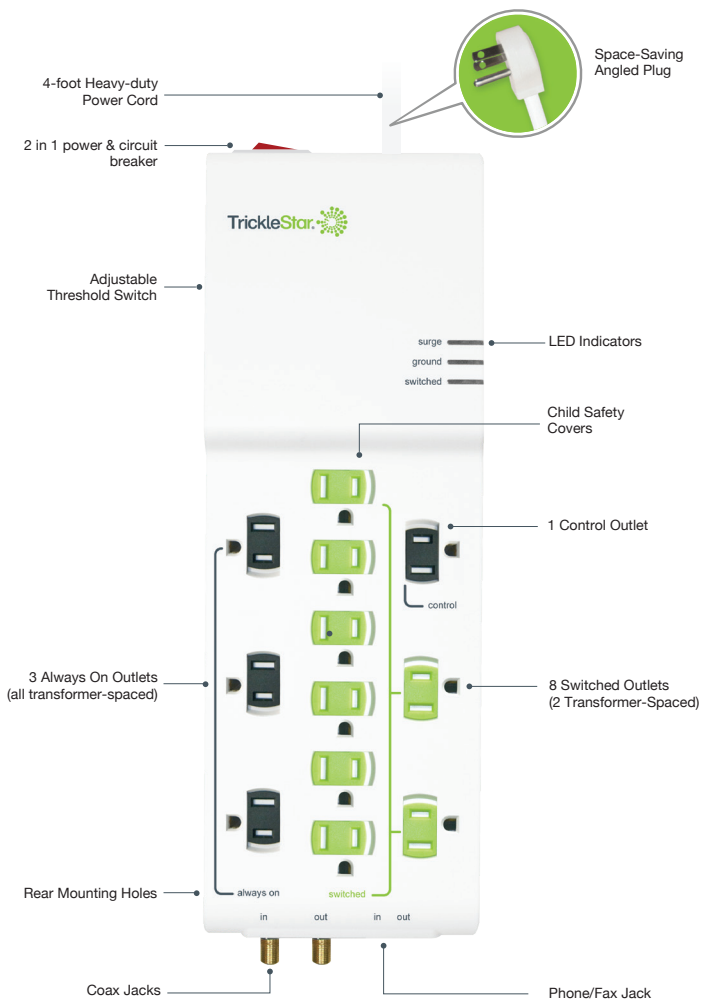
TV



PC



FEATURE DIAGRAM



ELECTRICAL SPECIFICATIONS

FOR INDOOR USE ONLY

Voltage	120 VAC +/- 10%, 60 Hz
Power Rating	15 A
Surge Protection	252,000 Amps/4,320 Joules
Switching Threshold	12/22/42 W
Noise Filtering	<40 dB
Standby Power Consumption	<1 Watt
Tel/Fax Connectors	RJ11
Coaxial Connectors	F-Type (Gold)

PHYSICAL SPECIFICATIONS

Operating Temperature	32° to 113° F
Storage Temperature	14° to 140° F
Humidity	5 to 90% N/C
IP Rating	IP20

APPROVALS

Conformity to product standards for safety and EMC.
2002/95/EG RoHs
Solid-State Controls for Appliance, UL 244A
Relocatable Power Taps, UL 1363
Standard for Surge Protective Devices, UL 1449



ORDER INFORMATION

TS1006 12-outlet Advanced PowerStrip, 4,320 Joules, w/ coaxial and RJ11 secondary protection, 4-foot power cord, 4C color box